

COMMUNITY COUNCILS

Be part of something great

Make a difference to your neighbourhood
Help improve your community
Meet new people and learn new skills

**Do this and more by joining
your community council.**



Community councils represent the views of local people, care about their neighbourhood and work together to make where they live a better place.

Each community council in the city is unique, reflecting the diversity of their local area. Being a part of your local community council is really rewarding. Everyone has something to offer and gain from taking part.

What does a community council do?

- builds stronger communities
- is a channel for local people to have a say and influence decisions in their area
- brings people together
- improves the local area through community activities
- tackles important issues such as planning and licensing
- sources funding for local improvements

Getting involved

There are lots of ways you can get involved:

- become a member
- take part in a survey or consultation
- follow your community council on local notice boards, or online through their website or social media channels
- attend a public meeting

It is really rewarding being a member of your community council and a great chance to make a difference.

Everyone has something to offer, regardless of experience, interests and background. You may also develop new skills along the way. Support is available.



Community council activities

Marchmont and Sciennes - successfully lobbied for an increase in frequency of the number 24 bus.

Juniper Green - initiated the Pentlands Book Festival and supported the Baberton Mains History Group, where local volunteers researched the history of their estate and produced a book and website.

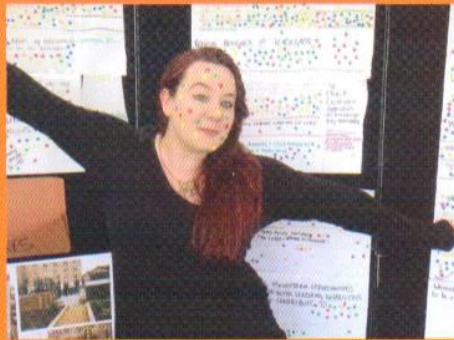


Wester Hailes - helped improve accessibility in the area, including lower kerbs and ramp access at bus stops.

Portobello - their community engagement was rated 'excellent' by the Scottish Community Development Centre, reflecting the regular consultations they have on a wide range of issues.



Firrhill, Currie and Colinton - Community Councils in Pentlands Neighbourhood Partnership area have taken turns to deliver an annual health fair, giving the local community a chance to find out about local services first hand.



Drum Brae - worked with the Drum Brae Library Hub and Clermiston Primary School to hold an exhibition celebrating 60 years of the Clermiston estate.

Leith Central, Leith Links and Leith Harbour & Newhaven Community Councils - since 2010 they have supported delivery of Leith Decides, a successful annual participatory budgeting programme giving local people the power to decide on how Community Grants are allocated.



How does a community council work?

Community councils are made up of local residents and community groups such as parent councils, residents and tenant's organisations and friends of local parks.

They are part of the Neighbourhood Partnership for their area and work with local elected members, Police Scotland, Scottish Fire and Rescue Service, NHS Lothian and the voluntary sector. Together they identify issues and ways to tackle them, making the area a better place to live.



There are 46 community council areas in Edinburgh. Each community council receives an annual grant from the Council to support engaging with the local community, promotion and general administrative costs. Community councils fundraise locally to deliver activities to benefit the community. Community councils are also supported by the Edinburgh Association of Community Councils, which brings community councils together to share interests and discuss issues.

"Anyone aged 16 or older and on the electoral roll can join."



Find out more

www.edinburgh.gov.uk/communitycouncils

www.edinburghnp.org.uk/community-councils



HAPPY TO TRANSLATE

You can get this document on tape, in Braille, large print and various computer formats if you ask us. Please contact the Interpretation and Translation Service (ITS) on 0131 242 8181 and quote reference number 16-0442. ITS can also give information on community language translations.

You can get more copies of this document by calling 0131 469 3838.

• EDINBURGH •
THE CITY OF EDINBURGH COUNCIL

NEIGHBOURHOOD
PARTNERSHIP

